

quick SELECTION carpets



quick SELECTION

carpets

de Unsere Quick Selection Carpets bietet 15 vielfältige Designs in drei Stilrichtungen mit je sechs Farbvarianten. Die Kollektion umfasst sowohl moderne und zeitlose, als auch klassische Muster.

en Our Quick Selection Carpets offers 15 varied designs in three styles, each with six colour variants. The collection includes modern and timeless as well as classic patterns.

fr Notre Quick Selection Carpets propose 15 designs variés dans trois styles avec six variantes de couleurs chacun. La collection comprend aussi bien des motifs modernes et intemporels que des motifs classiques.

- Produziert mit modernster Chromojet-Technologie
- Verfügbar in zwei Qualitäten
- Farbbank mit 24 Farben
- Drei verschiedene Rubriken
- Fünf Designs pro Stilrichtung
- Sechs Farbvarianten pro Design
- Unkomplizierte Auswahl
- Einfach zu bestellen
- Schneller Musterservice
- Kurze Lieferzeiten
- Wettbewerbsfähige Preise

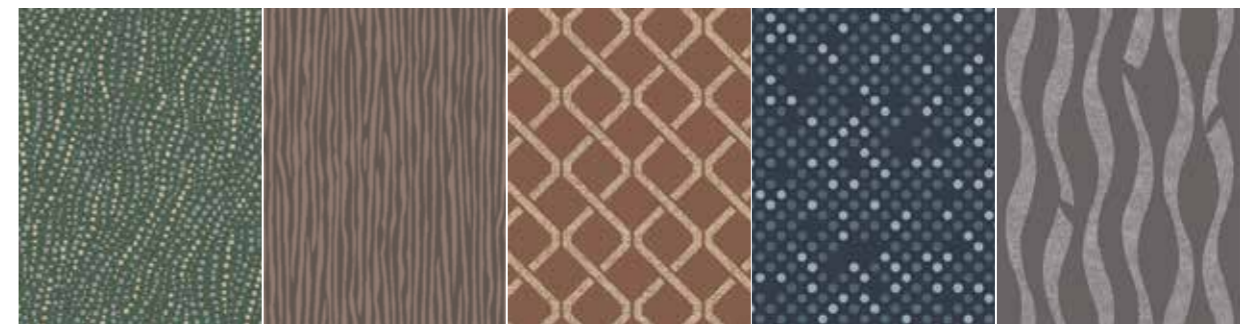
- Manufactured with the latest Chromojet technology
- Available in two qualities
- Colour bank with 24 colours
- Three different categories
- 6 colour choices per design
- Uncomplicated selection
- Easy to order
- Quick sample service
- Short delivery times
- Competitive prices

- Fabriqué avec la dernière technologie Chromojet
- Disponible en deux qualités
- Banque de couleurs avec 24 couleurs
- Trois rubriques différentes
- 6 choix de coloris différents par modèle
- Une sélection simple
- Facile à commander
- Un envoi d'échantillon rapide
- Des délais de livraison courts
- Des prix compétitifs

MODERN

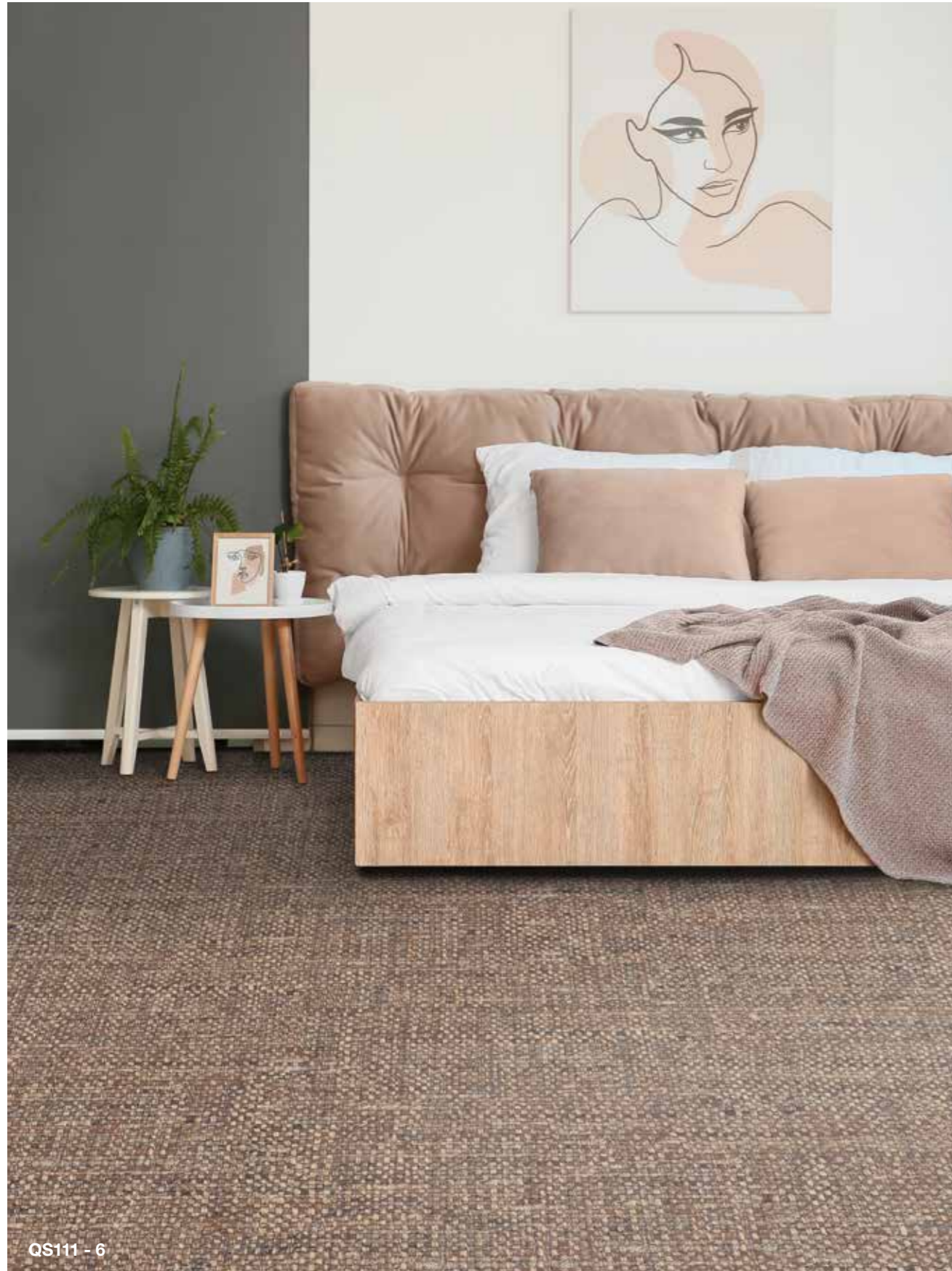


TIMELESS



CLASSIC



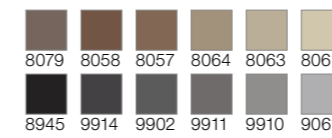


QS111 - 6



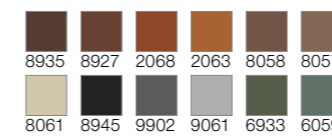
QS111 - 1

Repeat appr. 400 × 232 cm
Det. appr. 67 × 67 cm



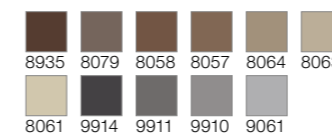
QS111 - 4

Repeat appr. 400 × 232 cm
Det. appr. 67 × 67 cm



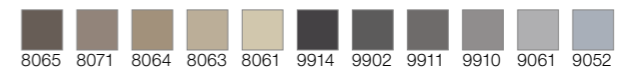
QS111 - 6

Repeat appr. 400 × 232 cm
Det. appr. 67 × 67 cm



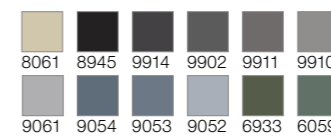
QS111 - 5

Repeat appr. 400 × 232 cm
Det. appr. ca. 200 × 300 cm



QS111 - 3

Repeat appr. 400 × 232 cm
Det. appr. 67 × 67 cm



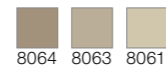
QS111 - 2

Repeat appr. 400 × 232 cm
Det. appr. 67 × 67 cm



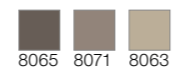
QS112 - 4

Repeat appr. 400 x 339 cm
Det. appr. ca. 200 x 300 cm



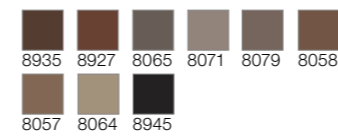
QS112 - 3

Repeat appr. 400 x 339 cm
Det. appr. 67 x 67 cm



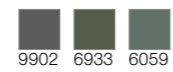
QS114 - 6

Repeat appr. 400 x 186 cm
Det. appr. 67 x 67 cm



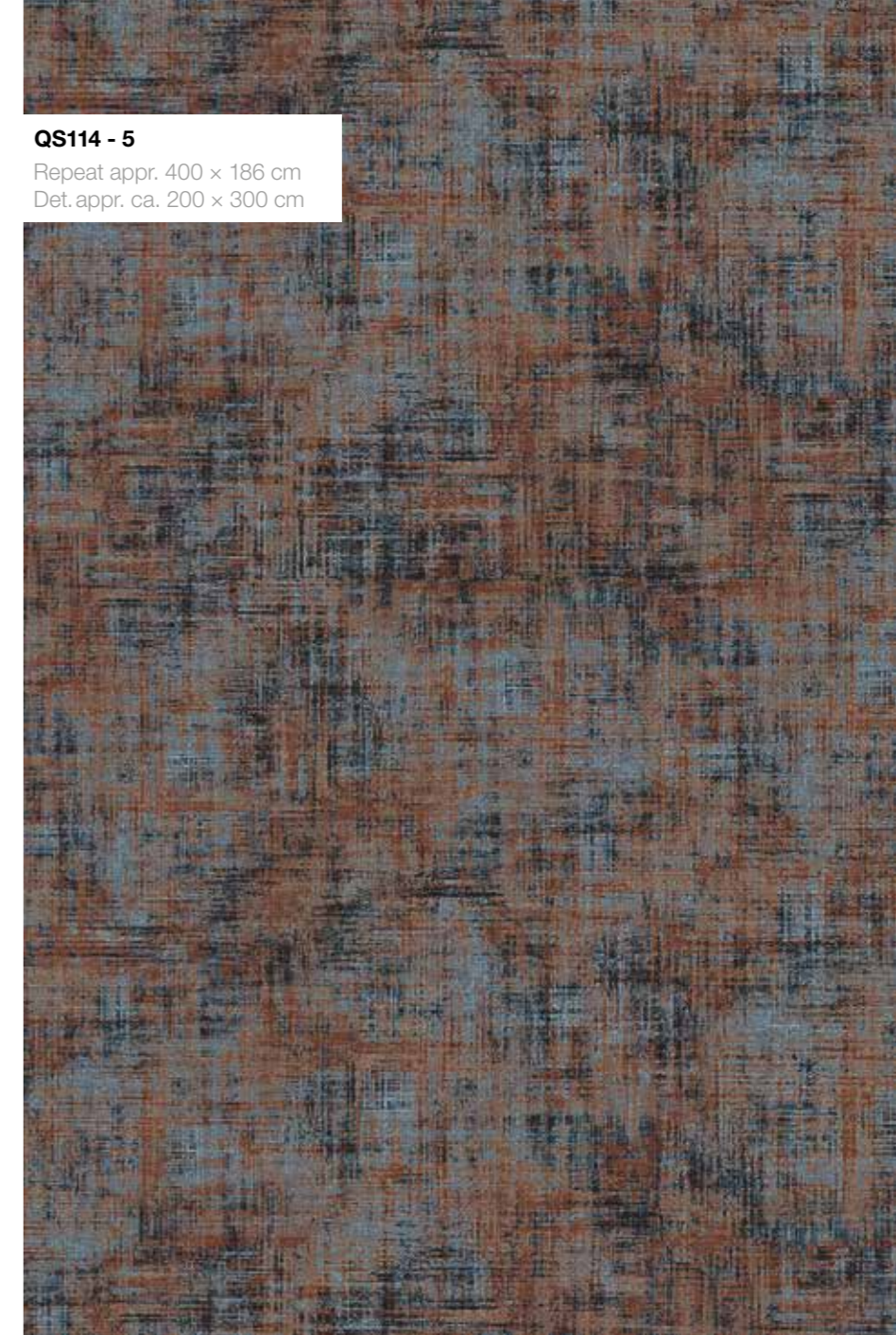
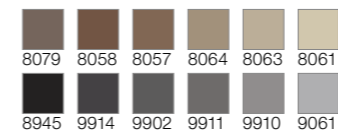
QS112 - 5

Repeat appr. 400 x 339 cm
Det. appr. 67 x 67 cm



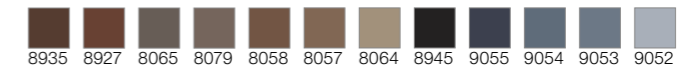
QS114 - 4

Repeat appr. 400 x 186 cm
Det. appr. 67 x 67 cm



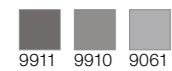
QS114 - 5

Repeat appr. 400 x 186 cm
Det. appr. ca. 200 x 300 cm



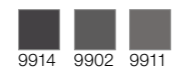
QS112 - 2

Repeat appr. 400 x 339 cm
Det. appr. 67 x 67 cm



QS112 - 1

Repeat appr. 400 x 339 cm
Det. appr. 67 x 67 cm



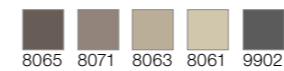
QS112 - 6

Repeat appr. 400 x 339 cm
Det. appr. 67 x 67 cm



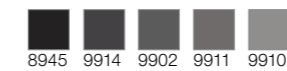
QS114 - 3

Repeat appr. 400 x 186 cm
Det. appr. 67 x 67 cm



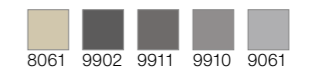
QS114 - 1

Repeat appr. 400 x 186 cm
Det. appr. 67 x 67 cm



QS114 - 2

Repeat appr. 400 x 186 cm
Det. appr. 67 x 67 cm



QS113 - 5

Repeat appr. 200 x 176 cm
Det. appr. ca. 200 x 300 cm



8935 8927 8079 8058 8057 8945



QS113 - 2

Repeat appr. 200 x 176 cm
Det. appr. 67 x 67 cm

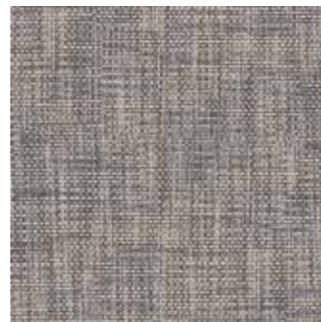
8065 8071 8064 8063 8061 9910



QS110 - 2

Repeat appr. 400 x 303 cm
Det. appr. 50 x 50 cm

8061 9911 9910 9061



QS113 - 6

Repeat appr. 200 x 176 cm
Det. appr. 67 x 67 cm

8061 9902 9911 9910 9061



QS110 - 1

Repeat appr. 400 x 303 cm
Det. appr. 50 x 50 cm

9914 9902 9911 9910

QS110 - 5

Repeat appr. 400 x 303 cm
Det. appr. ca. 200 x 300 cm



9055 9054 9053 9052



QS113 - 3

Repeat appr. 200 x 176 cm
Det. appr. 67 x 67 cm

8061 9914 9902 9061 6933 6059



QS113 - 1

Repeat appr. 200 x 176 cm
Det. appr. 67 x 67 cm

8945 9914 9902 9911 9910 9061



QS113 - 4

Repeat appr. 200 x 176 cm
Det. appr. 67 x 67 cm

9914 9061 9055 9054 9053 9052



QS110 - 6

Repeat appr. 400 x 303 cm
Det. appr. 50 x 50 cm

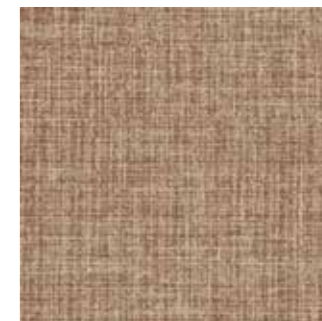
9910 9061 6933 6059



QS110 - 3

Repeat appr. 400 x 303 cm
Det. appr. 50 x 50 cm

8065 8071 8063 8061



QS110 - 4

Repeat appr. 400 x 303 cm
Det. appr. 50 x 50 cm

8057 8064 8063 8061

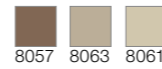


QS102 - 1



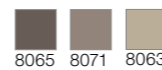
QS102 - 4

Repeat appr. 133 x 131 cm
Det. appr. 67 x 67 cm



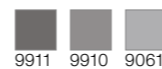
QS102 - 5

Repeat appr. 133 x 131 cm
Det. appr. 67 x 67 cm



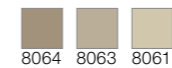
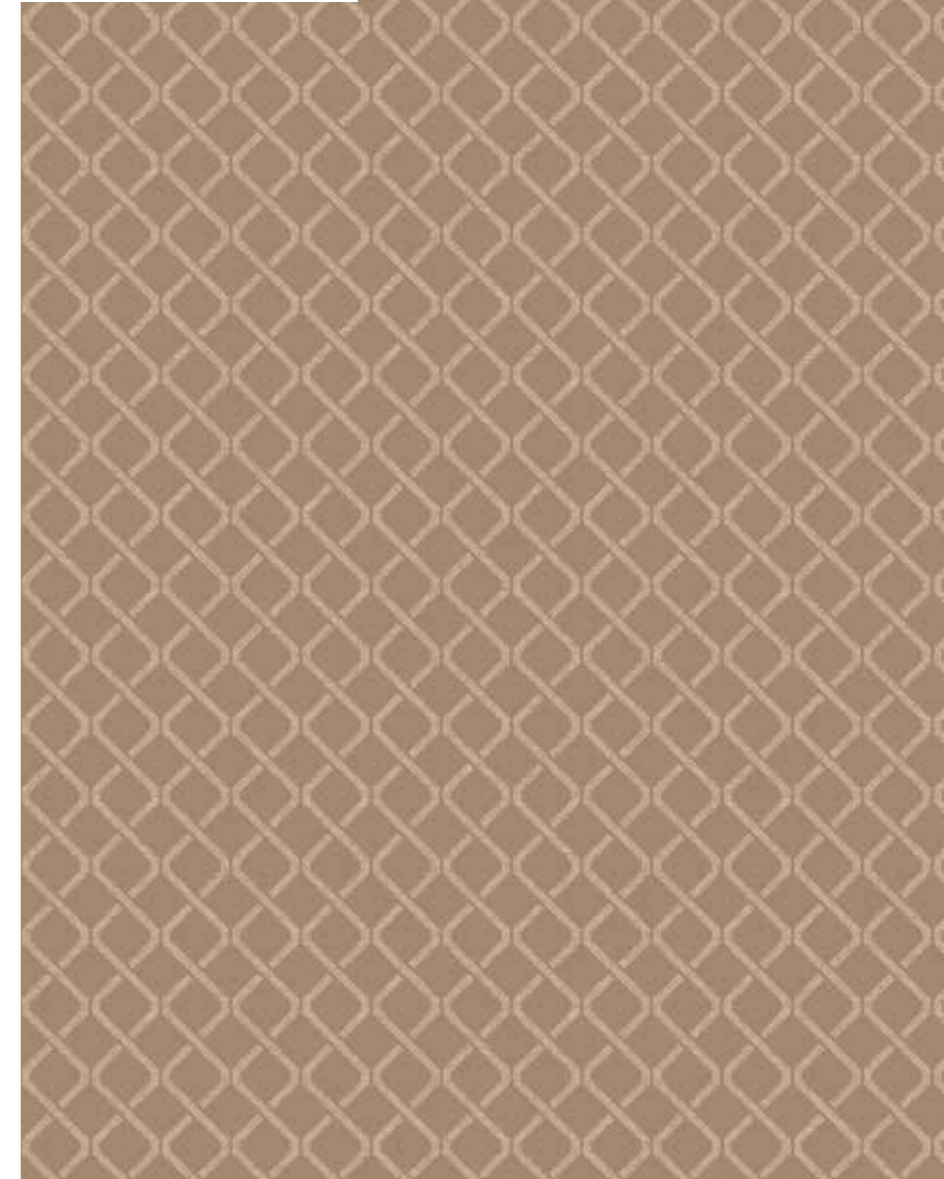
QS102 - 1

Repeat appr. 133 x 131 cm
Det. appr. 67 x 67 cm



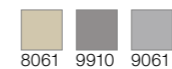
QS102 - 3

Repeat appr. 133 x 131 cm
Det. appr. ca. 200 x 300 cm



QS102 - 2

Repeat appr. 133 x 131 cm
Det. appr. 67 x 67 cm



QS102 - 6

Repeat appr. 133 x 131 cm
Det. appr. 67 x 67 cm





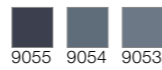
QS100 - 2
Repeat appr. 67 x 66 cm
Det. appr. ca. 200 x 300 cm



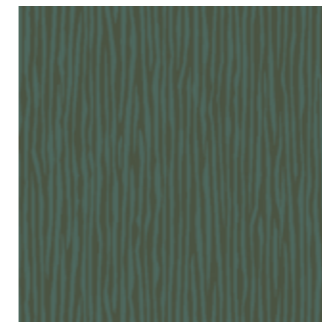
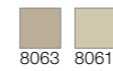
QS100 - 1
Repeat appr. 67 x 66 cm
Det. appr. 67 x 67 cm



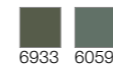
QS100 - 3
Repeat appr. 67 x 66 cm
Det. appr. 67 x 67 cm



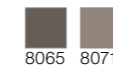
QS103 - 4
Repeat appr. 100 x 98 cm
Det. appr. 67 x 67 cm



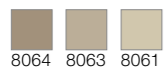
QS103 - 5
Repeat appr. 100 x 98 cm
Det. appr. 67 x 67 cm



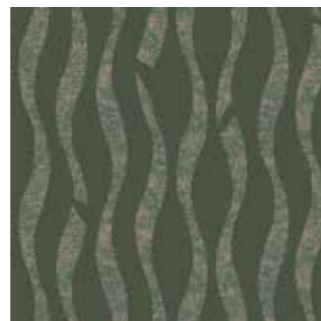
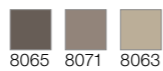
QS103 - 3
Repeat appr. 100 x 98 cm
Det. appr. ca. 200 x 300 cm



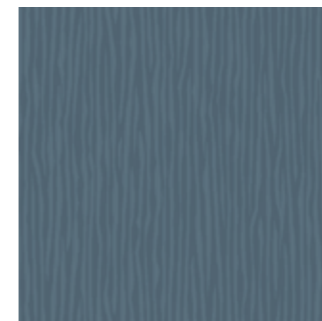
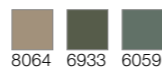
QS100 - 5
Repeat appr. 67 x 66 cm
Det. appr. 67 x 67 cm



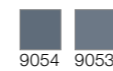
QS100 - 4
Repeat appr. 67 x 66 cm
Det. appr. 67 x 67 cm



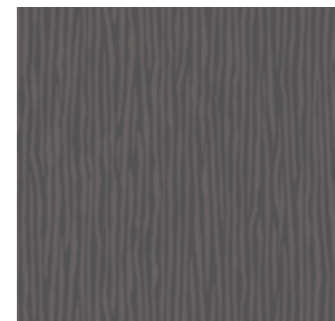
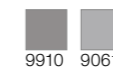
QS100 - 6
Repeat appr. 67 x 66 cm
Det. appr. 67 x 67 cm



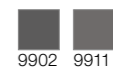
QS103 - 6
Repeat appr. 100 x 98 cm
Det. appr. 67 x 67 cm



QS103 - 2
Repeat appr. 100 x 98 cm
Det. appr. 67 x 67 cm

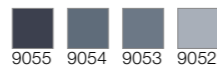


QS103 - 1
Repeat appr. 100 x 98 cm
Det. appr. 67 x 67 cm

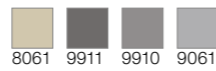




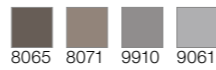
QS104 - 6
Repeat appr. 100 × 98 cm
Det. appr. ca. 200 × 300 cm



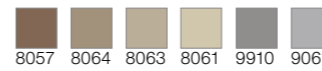
QS104 - 2
Repeat appr. 100 × 98 cm
Det. appr. 67 × 67 cm



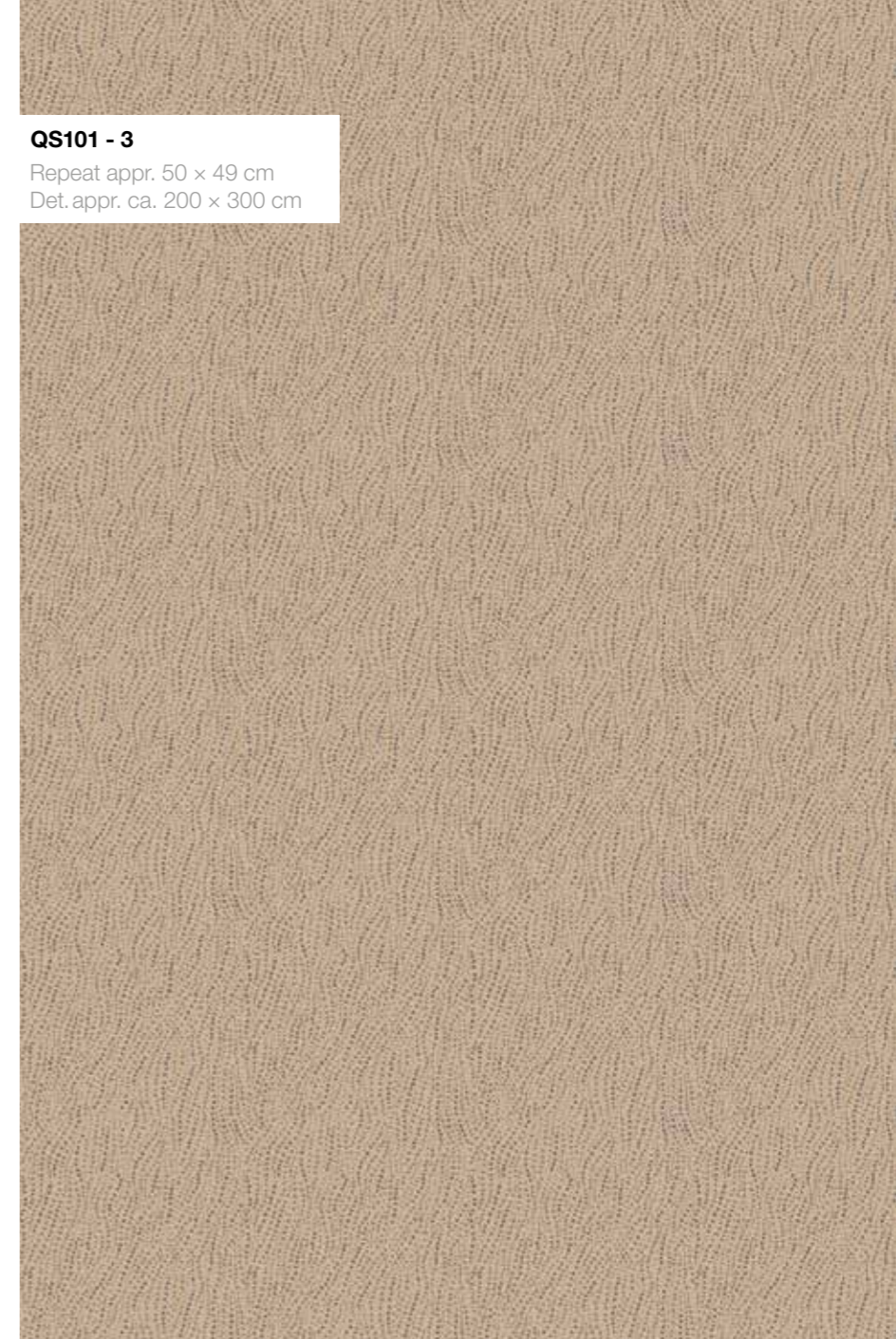
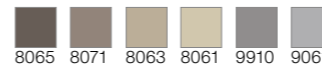
QS104 - 3
Repeat appr. 100 × 98 cm
Det. appr. 67 × 67 cm



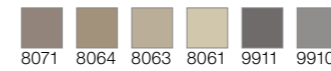
QS101 - 4
Repeat appr. 50 × 49 cm
Det. appr. 50 × 50 cm



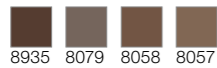
QS101 - 2
Repeat appr. 50 × 49 cm
Det. appr. 50 × 50 cm



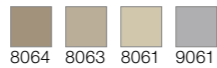
QS101 - 3
Repeat appr. 50 × 49 cm
Det. appr. ca. 200 × 300 cm



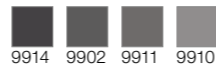
QS104 - 5
Repeat appr. 100 × 98 cm
Det. appr. 67 × 67 cm



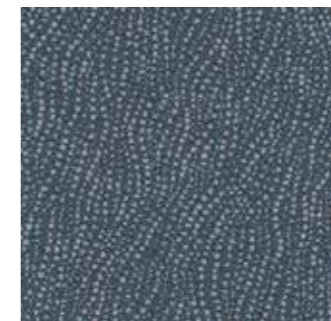
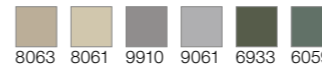
QS104 - 4
Repeat appr. 100 × 98 cm
Det. appr. 67 × 67 cm



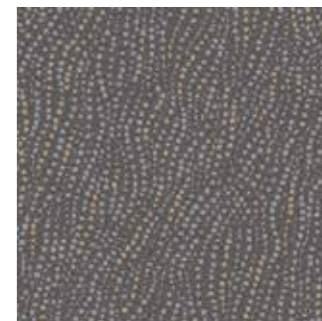
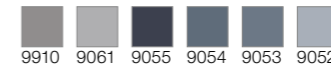
QS104 - 1
Repeat appr. 100 × 98 cm
Det. appr. 67 × 67 cm



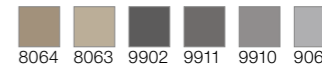
QS101 - 5
Repeat appr. 50 × 49 cm
Det. appr. 50 × 50 cm



QS101 - 6
Repeat appr. 50 × 49 cm
Det. appr. 50 × 50 cm



QS101 - 1
Repeat appr. 50 × 49 cm
Det. appr. 50 × 50 cm



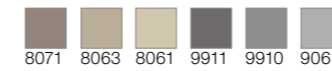


QS108 - 2



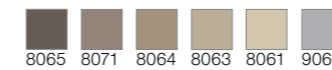
QS108 - 3

Repeat appr. 44 × 58 cm
Det. appr. 67 × 67 cm



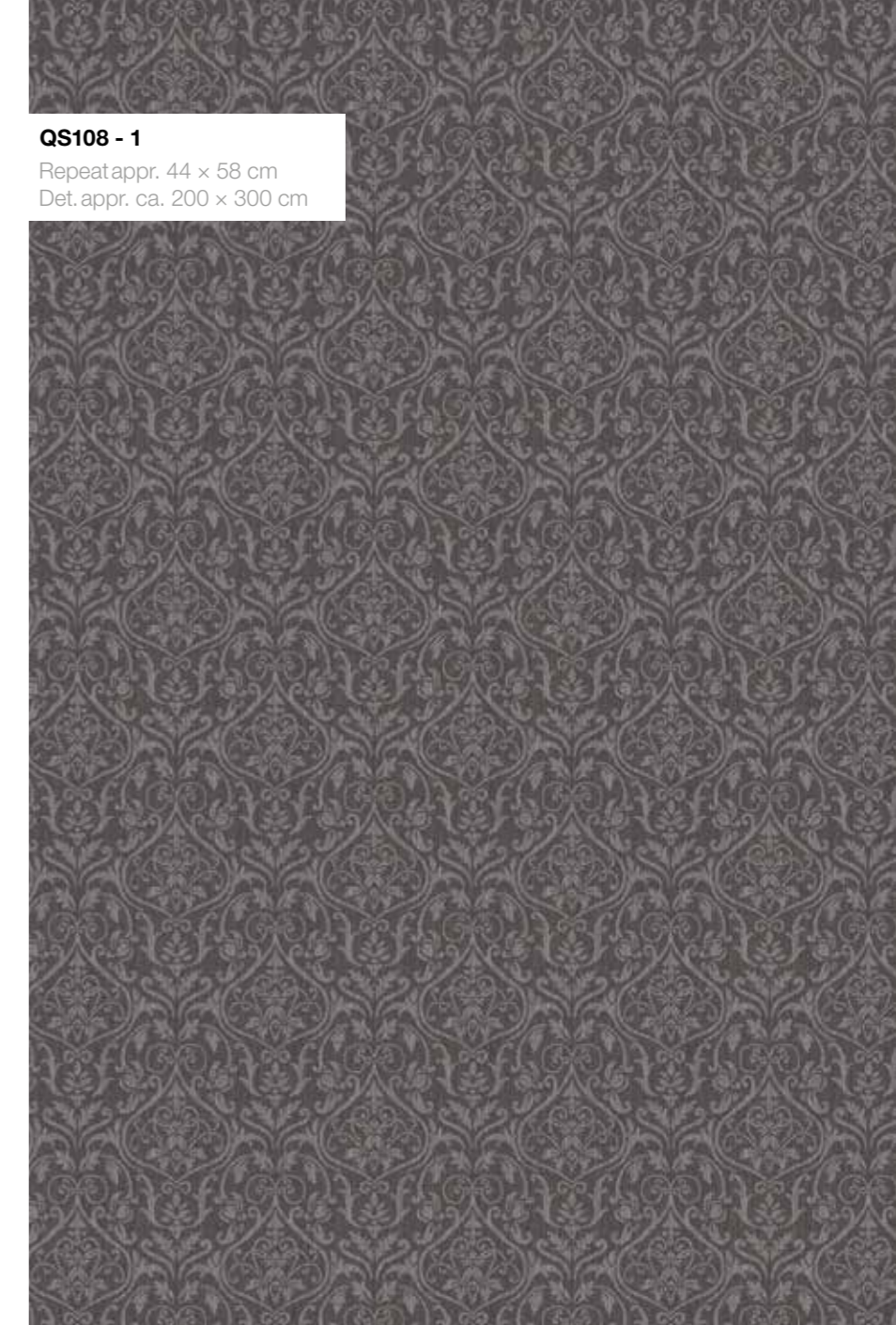
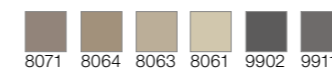
QS108 - 5

Repeat appr. 44 × 58 cm
Det. appr. 67 × 67 cm



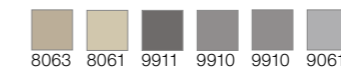
QS108 - 2

Repeat appr. 44 × 58 cm
Det. appr. 67 × 67 cm



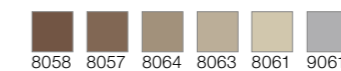
QS108 - 1

Repeat appr. 44 × 58 cm
Det. appr. ca. 200 × 300 cm



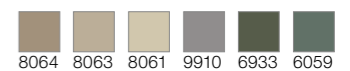
QS108 - 4

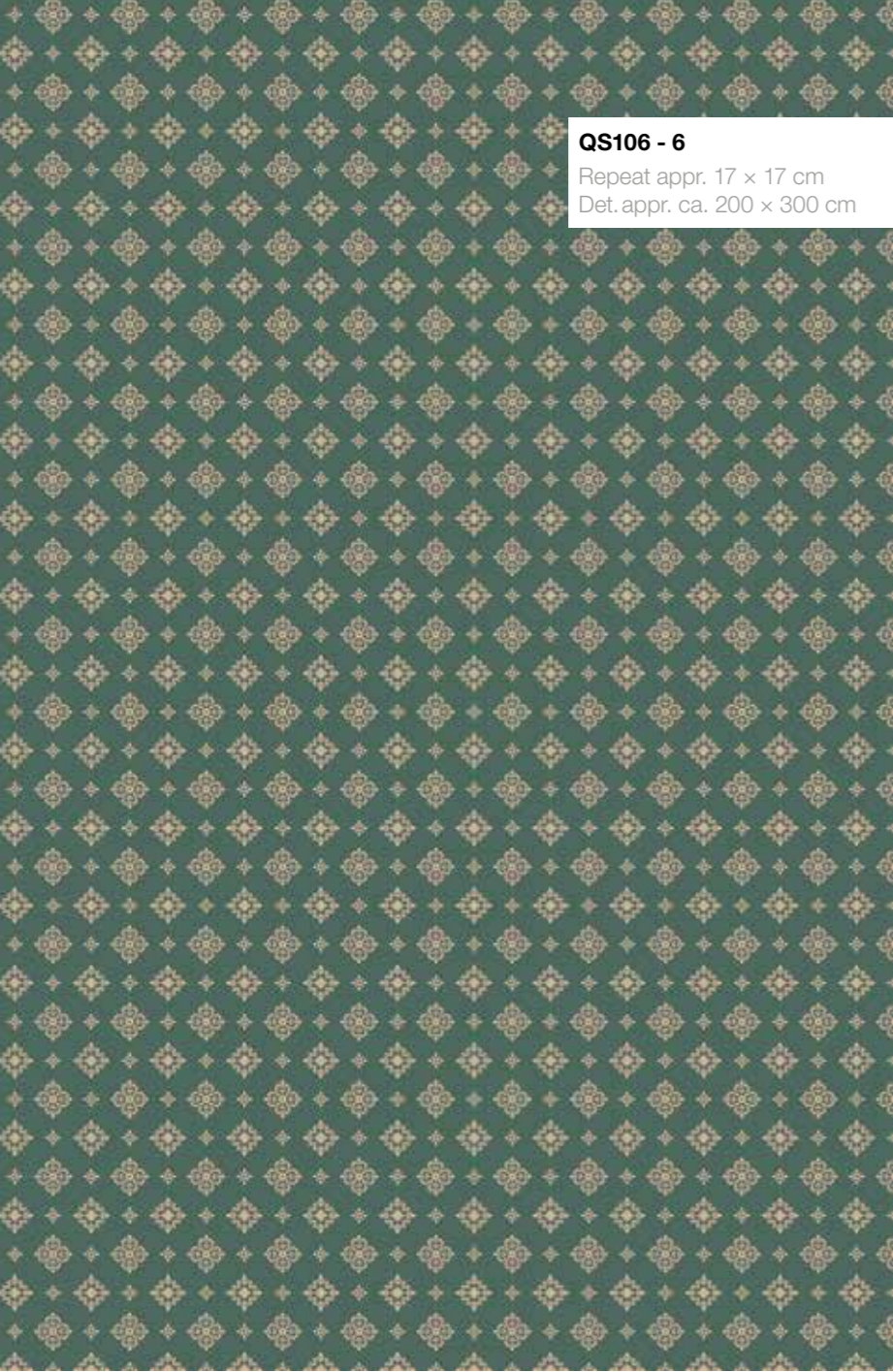
Repeat appr. 44 × 58 cm
Det. appr. 67 × 67 cm



QS108 - 6

Repeat appr. 44 × 58 cm
Det. appr. 67 × 67 cm





QS106 - 6
Repeat appr. 17 x 17 cm
Det. appr. ca. 200 x 300 cm



QS106 - 4
Repeat appr. 17 x 17 cm
Det. appr. 50 x 50 cm
8064 8063 8061



QS106 - 5
Repeat appr. 17 x 17 cm
Det. appr. 50 x 50 cm
8071 8063 8061

8063 8061 6059



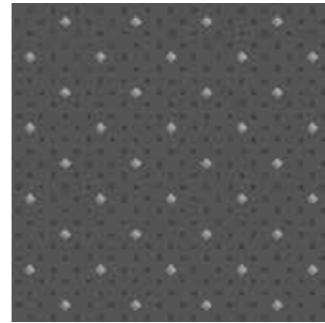
QS106 - 2
Repeat appr. 17 x 17 cm
Det. appr. 50 x 50 cm
8063 8061 9910



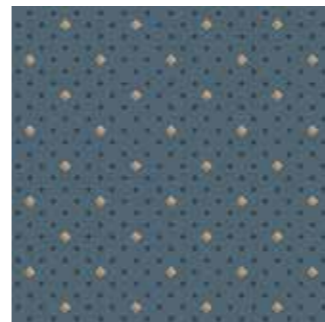
QS106 - 1
Repeat appr. 17 x 17 cm
Det. appr. 50 x 50 cm
8063 9902 9910



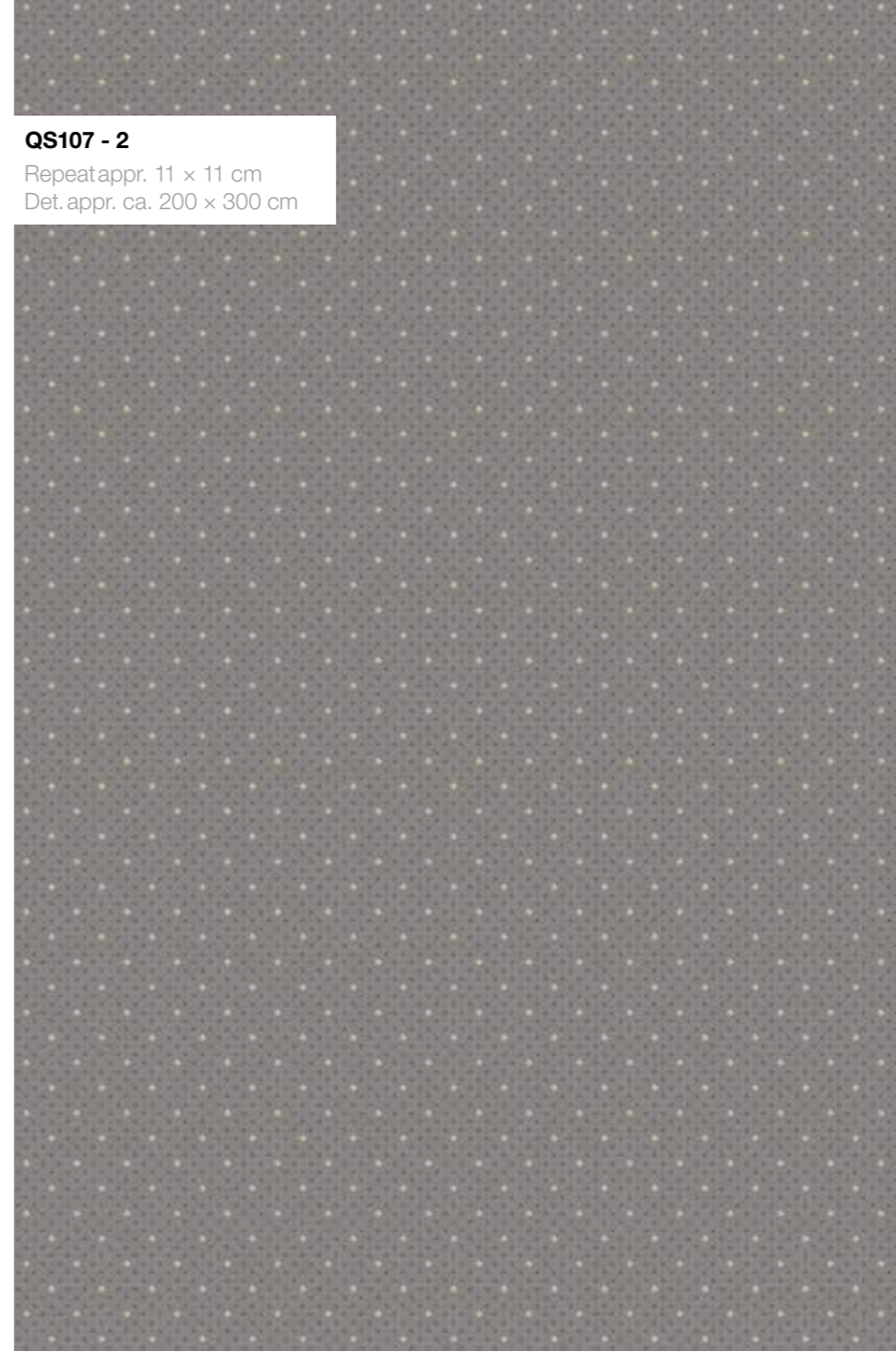
QS106 - 3
Repeat appr. 17 x 17 cm
Det. appr. 50 x 50 cm
8065 8071 8063



QS107 - 1
Repeat appr. 11 x 11 cm
Det. appr. 50 x 50 cm
9914 9902 9910 9061

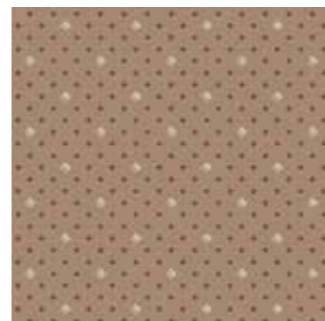


QS107 - 6
Repeat appr. 11 x 11 cm
Det. appr. 50 x 50 cm
8064 8063 9055 9054



QS107 - 2
Repeat appr. 11 x 11 cm
Det. appr. ca. 200 x 300 cm

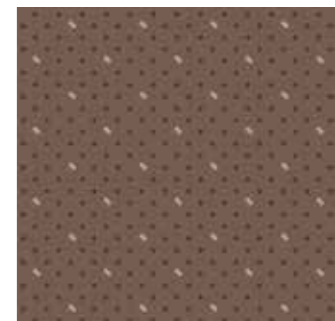
8063 8061 9911 9910



QS107 - 5
Repeat appr. 11 x 11 cm
Det. appr. 50 x 50 cm
8058 8064 8063 8061



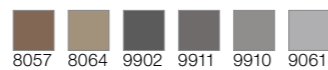
QS107 - 3
Repeat appr. 11 x 11 cm
Det. appr. 50 x 50 cm
8065 8071 8063 8061



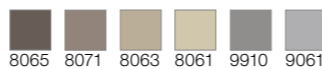
QS107 - 4
Repeat appr. 11 x 11 cm
Det. appr. 50 x 50 cm
8935 8079 8057 8063



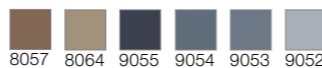
QS109 - 1
Repeat appr. 400 x 273 cm
Det. appr. ca. 200 x 300 cm



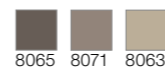
QS109 - 2
Repeat appr. 400 x 273 cm
Det. appr. 100 x 100 cm



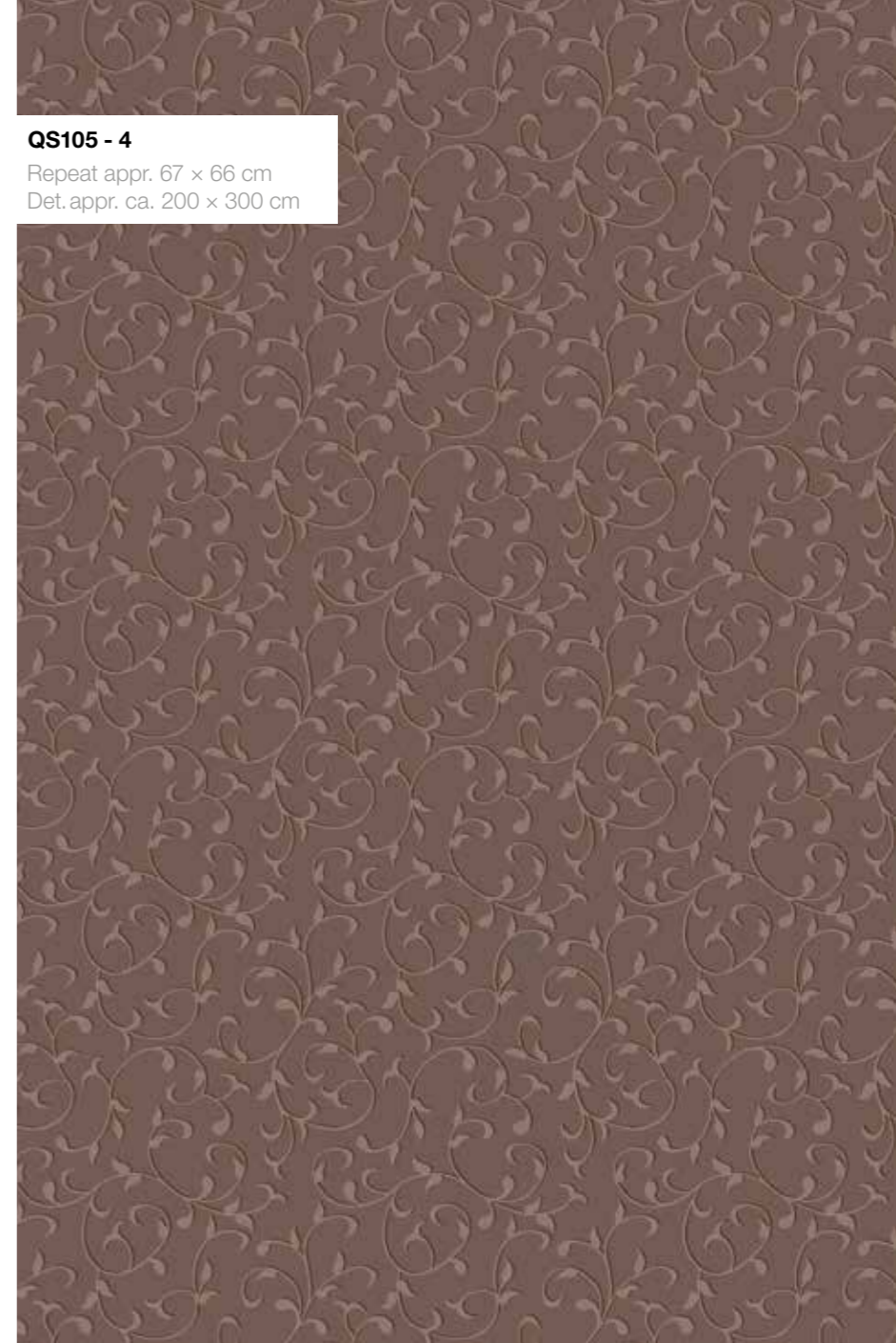
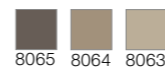
QS109 - 5
Repeat appr. 400 x 273 cm
Det. appr. 100 x 100 cm



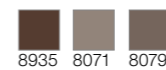
QS105 - 3
Repeat appr. 67 x 66 cm
Det. appr. 67 x 67 cm



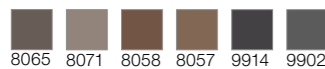
QS105 - 5
Repeat appr. 67 x 66 cm
Det. appr. 67 x 67 cm



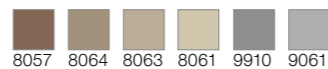
QS105 - 4
Repeat appr. 67 x 66 cm
Det. appr. ca. 200 x 300 cm



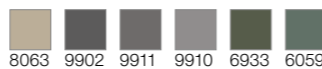
QS109 - 6
Repeat appr. 400 x 273 cm
Det. appr. 100 x 100 cm



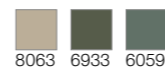
QS109 - 3
Repeat appr. 400 x 273 cm
Det. appr. 100 x 100 cm



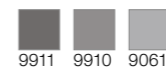
QS109 - 4
Repeat appr. 400 x 273 cm
Det. appr. 100 x 100 cm



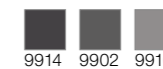
QS105 - 6
Repeat appr. 67 x 66 cm
Det. appr. 67 x 67 cm



QS105 - 2
Repeat appr. 67 x 66 cm
Det. appr. 67 x 67 cm

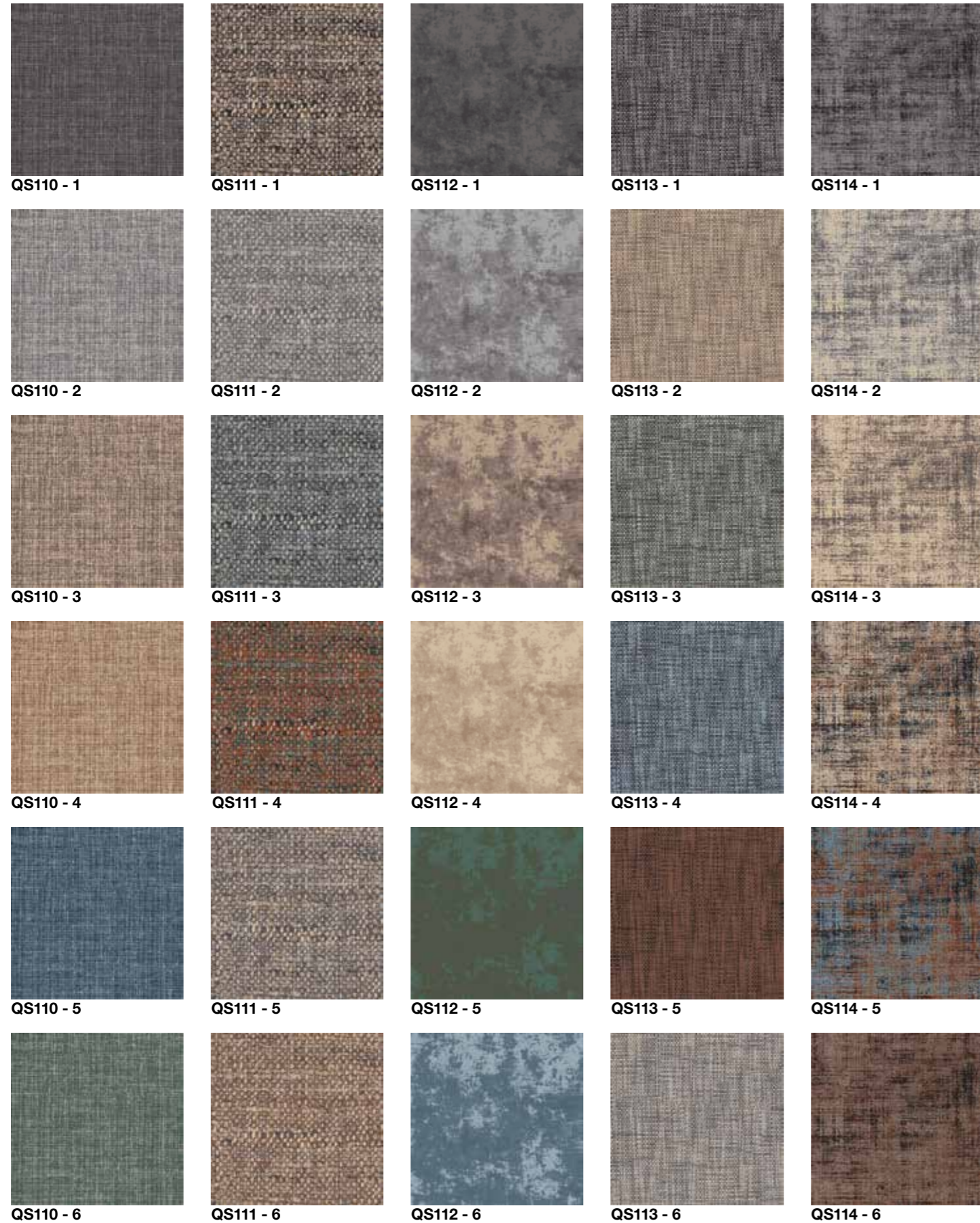


QS105 - 1
Repeat appr. 67 x 66 cm
Det. appr. 67 x 67 cm

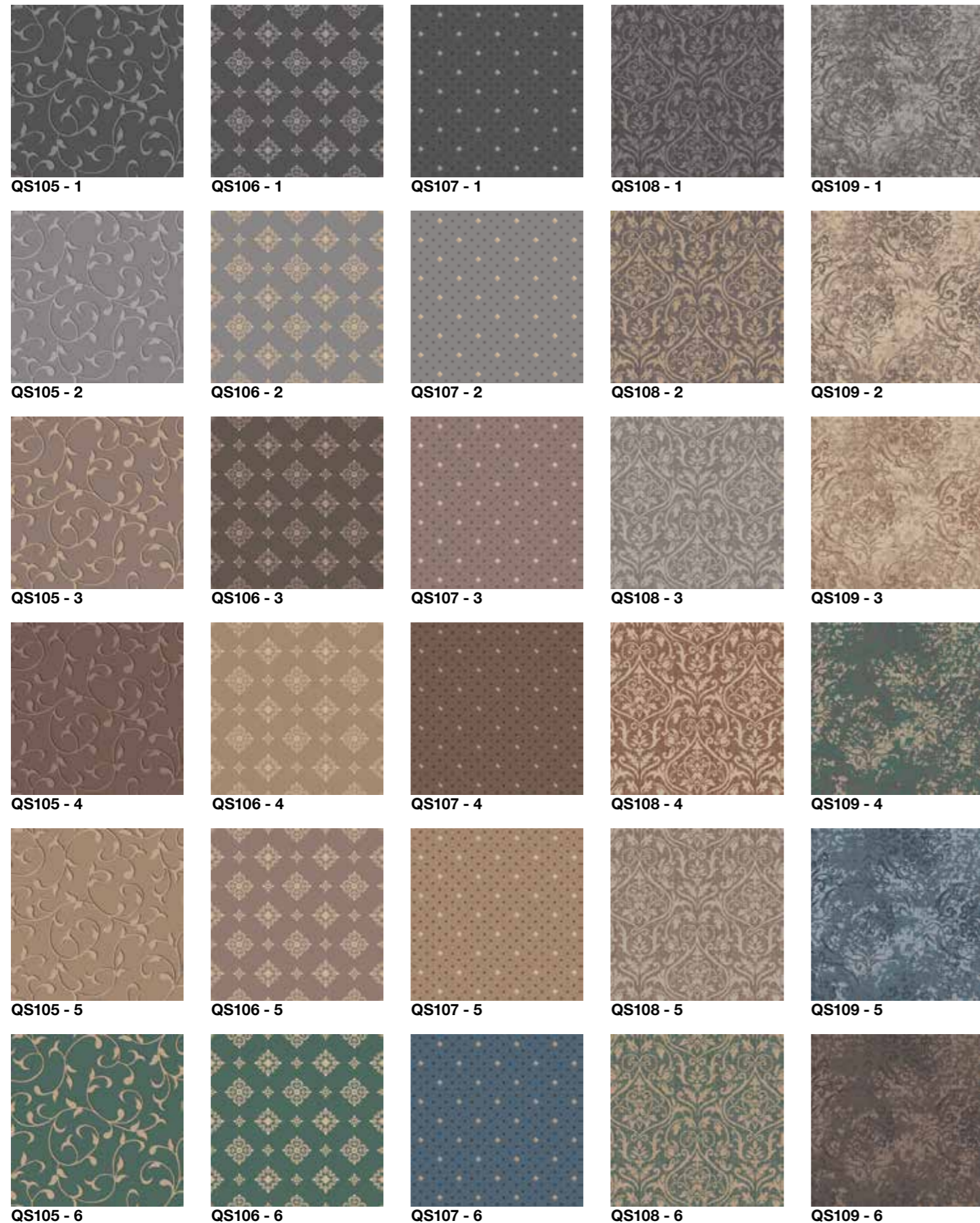


MODERN carpets

TIMELESS carpets



CLASSIC carpets



Farben | Colours | Couleurs



Bitte beachten Sie, dass die in dieser Kollektion dargestellten Farben nur annähernd den tatsächlichen Teppichbodenfarben entsprechen. Verwenden Sie bitte unsere original Farbmuster.

Please note that colours in this printed brochure are approximate. For correct colours please refer to our colour samples.

Veuillez noter que les couleurs représentées dans cette collection sont approximatives par rapport aux couleurs réelles. S'il vous plaît utiliser notre nuancier original.

Data sheet

AP 900 DC 900

Status: 16.05.2024

delivery form	rolls	400 cm wide
construction	tufted cut pile	1/10" gauge
pile material		100 % Polyamide 6
primary backing	non-woven	75 % PES / 25 % PA
secondary backing	woven	100 % PP, 64 g/m ²
pattern	digital paste printing	Chromojet
total weight	ISO 8543	ca. 1930 g/m ²
total thickness	ISO 1765	ca. 6,5 mm
pile thickness	ISO 1766	ca. 4,3 mm
total pile yarn weight		ca. 980 g/m ²
pile density	ISO 8543	ca. 0,15 g/cm ³
number of tufts	ISO 1763	ca. 173800/m ²
CE-number		1658-CPR-3139
DoP-number		0001
Prodis-licence-number		FDBD24FD
Environmental Product Declaration	ISO 14025+EN 15804+A2	EPD-HBM-20170149-CBC1-DE + annex LC 3



use class

33 - commercial: heavy
DIN EN 1307 | ISO 10361



luxury class

LC 3
DIN EN 1307 | DIN EN 8543



stair suitability

intensive
DIN EN 1307 | DIN EN ISO 12951



castor chair suitability

intensive
DIN EN 1307 | DIN EN ISO 4918



colour fastness to light

≥ 5
DIN EN 1307 | DIN EN ISO 105-B02

colour fastness to water

≥ 4
DIN EN 1307 | DIN EN ISO 105-E01

colour fastness to rubbing

≥ 3-4
DIN EN 1307 | DIN EN ISO 105-X12



resistance of cut edges

DIN EN ISO 10833



slip resistance μ

≥ 0,30
DIN EN 14041 | DIN EN 13893



thermal resistance

ca. 0,1 m²K/W
DIN EN 12667



impact sound reduction ΔL_w

ca. 26 dB
DIN EN ISO 717-2 | DIN EN ISO 10140-3



sound absorption α_w

ca. 0,2
DIN EN ISO 354



electrical behaviour

body voltage ≤ 2 kV
ISO 6356



reaction to fire

Cfl-s1
DIN EN 13501-1 | DIN EN ISO 9239-1,11925-1



We reserve the right to make technical changes that serve to improve quality. In rare cases, permanent shading may occur in velour carpets without impairing the usability. The cause of this is not due to the material or construction. Therefore, no warranty can be assumed for this. Halbmond's carpets and rugs must be installed in accordance with the respective Halbmond installation recommendations and the state of the art. All information is based on current knowledge and experience. They can only be general information without guarantee of properties, as we have no influence on the construction site conditions and processing. Due to the wide range of possible influences when using our products, they do not exempt the installer from carrying out his own tests and trials. Regular maintenance cleaning is decisive for the cleanliness, value retention and good appearance of the floor covering.

Data sheet

Arcade DC 650

Status: 16.05.2024

delivery form	rolls	400 cm wide
construction	tufted cut pile non heatset	1/10" gauge
pile material		100 % Polyamide 6
primary backing	non-woven	75 % PES / 25 % PA
secondary backing	woven	100 % PP, 64 g/m ²
pattern	digital paste printing	Chromojet
total weight	ISO 8543	ca. 1653 g/m ²
total thickness	ISO 1765	ca. 5,5 mm
pile thickness	ISO 1766	ca. 3,4 mm
total pile yarn weight		ca. 668 g/m ²
pile density	ISO 8543	ca. 0,12 g/cm ³
number of tufts	ISO 1763	ca. 316000/m ²
CE-number		1658-CPR-3139
DoP-number		0001
Prodis-licence-number		CBF19FC1
Environmental Product Declaration	ISO 14025+EN 15804+A2	EPD-HBM-20170149-CBC1-DE + annex LC 3



use class

33 - commercial: heavy
DIN EN 1307 | ISO 10361



luxury class

LC 2
DIN EN 1307 | DIN EN 8543



stair suitability

intensive
DIN EN 1307 | DIN EN ISO 12951



castor chair suitability

intensive
DIN EN 1307 | DIN EN ISO 4918



colour fastness to light

≥ 5
DIN EN 1307 | DIN EN ISO 105-B02

colour fastness to water

≥ 4
DIN EN 1307 | DIN EN ISO 105-E01

colour fastness to rubbing

≥ 3-4
DIN EN 1307 | DIN EN ISO 105-X12



resistance of cut edges

DIN EN ISO 10833



slip resistance μ

≥ 0,30
DIN EN 14041 | DIN EN 13893



thermal resistance

ca. 0,08 m²K/W
DIN EN 12667



impact sound reduction ΔL_w

ca. 26 dB
DIN EN ISO 717-2 | DIN EN ISO 10140-3



sound absorption α_w

ca. 0,2
DIN EN ISO 354



electrical behaviour

body voltage ≤ 2 kV
ISO 6356



reaction to fire

Cfl-s1
DIN EN 13501-1 | DIN EN ISO 9239-1,11925-1



We reserve the right to make technical changes that serve to improve quality. In rare cases, permanent shading may occur in velour carpets without impairing the usability. The cause of this is not due to the material or construction. Therefore, no warranty can be assumed for this. Halbmond's carpets and rugs must be installed in accordance with the respective Halbmond installation recommendations and the state of the art. All information is based on current knowledge and experience. They can only be general information without guarantee of properties, as we have no influence on the construction site conditions and processing. Due to the wide range of possible influences when using our products, they do not exempt the installer from carrying out his own tests and trials. Regular maintenance cleaning is decisive for the cleanliness, value retention and good appearance of the floor covering.

CARPET PRODUCT GUIDE



Halbmond Teppichwerke GmbH
Brückenstraße 1
D-08606 Oelsnitz, Germany
Tel.: +49 37421-42-0
Fax: +49 37421-42-571
info@halbmond.de
www.halbmond.de



HTW DESIGN CARPET
Tel.: +49 5221-1779-0
info@htw-designcarpet.de
www.htw-designcarpet.de